

MEN

MATCHESFASHION.COM

WOMEN

JUST IN

SHOP

DESIGNERS

HOLIDAY SHOP

SALE



## 10 RULES OF STYLE

# ANNIE MONROE

The 24-year-old organ player in hot LA band The Like has mastered playful 1960s style. Here, she tells *The Style Report* her secrets.

Words by Ellen Burney  
Photographs by Shaniqua Jarvis  
Styling by Verity Parker

## 1 | STREAMLINE YOUR COATS

'I keep my coats simple and uniform. I wear either a dark brown suede trench coat or a vintage, oversized, military-style blue jacket with buttons on each side and red thread around each button. I really like monochrome and recently got an amazing 1960s-style black and white panelled A-line coat.'

[SHOP COATS >](#)

## 2 | KEEP HEMS HIGH AND COLLARS HIGHER

'I like to wear shift mini dresses, and every time I wear a dress that is below my knees I feel very uncomfortable. I love to pair a high collar with a short hem on stage as well. There's a girly, fun quality to mini dresses that I feel really goes with our style of music. They inspire hip-swinging, doing the "mashed potato" and always give me a sense of adventure.'

[SHOP MINI DRESSES >](#)



## 3 | CHOOSE EXTRAVAGANT EVENINGWEAR

'In the evenings I like to wear a jumpsuit. I have a midnight blue halter-neck one with a baggy full leg that is cinched in at the waist. It feels very art deco to me. Another favourite is a short leopard-print lace dress. It's slightly flared, with a 1960s feel, and I wear it with a nude slip underneath.'

[SHOP EVENINGWEAR >](#)



**HONOR**  
Liquid sateen cut-out dress  
£1,440  
[SHOP NOW >](#)

**STELLA MCCARTNEY**  
Alina snake-jacquard dress  
£875  
[SHOP NOW >](#)

**ROKSANDA ILINCIC**  
Bronti silk dupion fitted dress  
£898  
[SHOP NOW >](#)

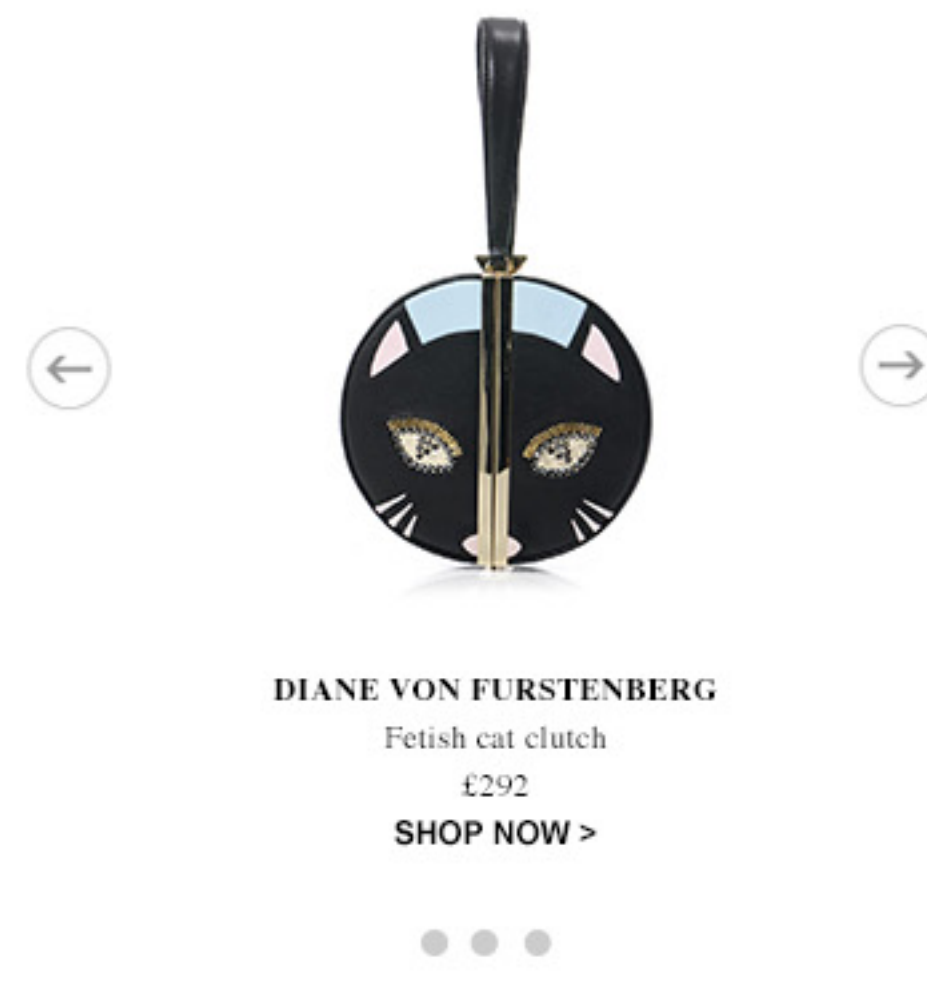
**SAINT LAURENT**  
Cadi shift dress  
£1,040  
[SHOP NOW >](#)



[SHOP CLUTCH BAGS >](#)

## 4 | CARRY A BAG

'I like interesting and intricate clutch bags or sometimes a larger messenger-style bag that I can wear over my shoulder. I always carry my phone, wallet, comb, mascara, liquid eyeliner, lipstick, hand cream, a pen and notepad, sunglasses, a compact mirror and my keys.'



**DIANE VON FURSTENBERG**  
Fetish cat clutch  
£292  
[SHOP NOW >](#)

## 5 | TRY A MASCULINE SHOE

'I like wearing manly shoes: lace-ups, brogues and oxfords. I have a pair of dark brown leather vintage chelsea boots that I like to wear with sheer ankle-high dress socks that have a frilly top.'

[SHOP FLAT SHOES >](#)



**NICHOLAS KIRKWOOD FOR ERDEM**  
Bi-colour leather flats  
£420  
[SHOP NOW >](#)

**MARNI**  
Metallic-toe brogues  
£390  
[SHOP NOW >](#)

**BALENCIAGA**  
Leather tassel loafers  
£405  
[SHOP NOW >](#)

## 6 | KEEP WAISTS HIGH

'All my trousers are typically a 1950s high-waisted style. I just bought a gingham pair, which I love, and a high-waisted pinstripe pair, too. I team them with colourful button-down blouses, or sheer blouses in cream with navy trims and ties. I often like to wear head-to-toe black and have a pair of skintight high-waisted black trousers that go with everything.'

[SHOP TROUSERS >](#)



**FENDI**  
[SHOP NOW >](#)

**ROKSANDA ILINCIC**  
[SHOP NOW >](#)

**SOPHIA WEBSTER**  
[SHOP NOW >](#)

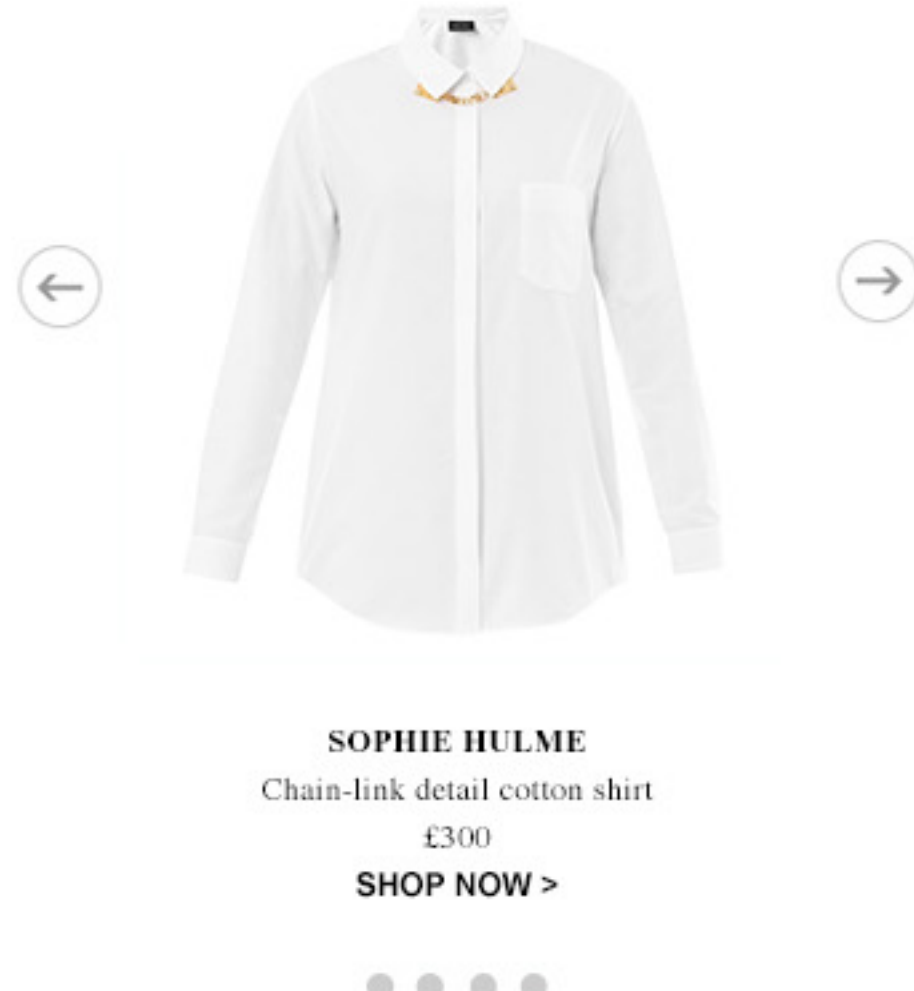
## 7 | REFER BACK

'For dressed-down eveningwear I like a classic Anna Karina-style schoolgirl pleated skirt worn with a knitted sweater, flat shoes and a black beret. I went to Turkey recently and made a new friend who gave me his handkerchief in a Scandinavian signature print. I've been wearing that around my neck a lot. I am inspired by film actresses such as Faye Dunaway, Julie Christie and Katharine Hepburn.'

[SHOP HOLLYWOOD STYLE >](#)

## 8 | KEEP COLLARS ON SHOW

'I wear a lot of boyish sweaters with pointed or round-collared shirts underneath. My favourite combination is a pointed white-collared top under a hot pink sweater.'



**SOPHIE HULME**  
Chain-link detail cotton shirt  
£300  
[SHOP NOW >](#)



[SHOP SHIRTS >](#)

## 9 | LOVE YOUR TIGHTS

'The band just got back from Japan and I filled up my suitcase to the brim with hosiery. Some are mock thigh-highs and some have black hearts over sheer legs or lacy seams up the back of the leg.'

## 10 | WEAR HEIRLOOMS

'I don't wear much jewellery, but what I do wear is important to me and has a special meaning. I have this necklace that's made from my grandmother's watch, and I have a heart-shaped signet ring that has my mother's initials on it.'

Hair Ashley Streicher. Make-up Roxanne Saffaie. Production Natalie Davis.

[SHOP THE SHOOT >](#)